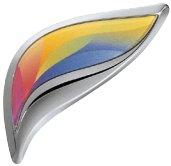


SHARP

MX-4050N/MX-3550N/MX-3050N
Digital Full Colour Multifunctional System



A3 COLOUR MFPs THAT
ARE ADAPTABLE TO YOUR
FUTURE NEEDS

When you invest in technology you're planning for growth **/This is Why** our MFPs adapt to meet your needs.

Essential Features &
Extra Value OptionsHigh Quality &
High Productivity

Advanced Functionality

Secure & Environmentally
FriendlyOptimising Business
EfficiencyOptimised Software
Solutions

Configuration Diagram

Capacity &
Connectivity Options

Finishing Options

Configuration Examples

Specifications

There are always new challenges to overcome /This is Why our MFPs are fit for the future.

When it comes to office equipment, you're not just buying for today, you're investing in the future – preparing to meet new (perhaps unexpected) challenges. That's why, with their broad range of options and upgrades, our versatile A3 colour MFPs are a great choice now and in the years ahead.

There are three cloud-capable models to choose from: the high performance MX-4050N, which prints and copies at an impressive 40 pages per minute (ppm), our mid-range 35 ppm MX-3550N, or the 30 ppm MX-3050N for smaller workgroups.

Click to learn more:

- ▶ [MX-4050N](#)
- ▶ [MX-3550N](#)
- ▶ [MX-3050N](#)



**All the essentials as standard...**

Every essential feature is included as standard and everything can be controlled from a large 10.1" colour LCD touchscreen, which tilts for easy viewing and gives you intuitive access to every function. It will even recommend the most environmentally-friendly setting for each task.

In addition, each user can customise the screen which supports multi-touch gestures for easily previewing and editing copy and scan jobs.

Scanning is fast and intuitive and you can scan mixed batches of colour and black & white documents automatically, even if they are of different sizes and weights.

Paper drawers accommodate up to SRA3 media and weights up to 300 g/m², for maximum versatility.

**...with all these extra-value options to choose from**

These new MFPs really are designed to adapt to your needs.

Options include:

- A wide range of finishing solutions including saddle-stitching, manual and stapleless stapling
- Single Sign-On capability for rapid access to popular cloud services
- Sharp OSA (Open Systems Architecture) for integration with network and cloud-based applications
- A range of Optimised Software Solutions for easier and more productive scanning, printing and mobile connectivity
- Compact PDF capability for scanning into convenient file sizes
- Adobe® PostScript® 3™ for enhanced graphics processing
- Fax expansion
- Job Separator Tray to prevent copy, print and fax jobs from getting mixed up

[CLICK TO LEARN MORE](#)[10.1" COLOUR LCD TOUCHSCREEN](#)



OPERATION PANEL TILTS TO SUIT
USER REQUIREMENTS



CHOICE OF FINISHERS WITH
1,000 OR 3,000-SHEET CAPACITY



100-SHEET REVERSING SINGLE
PASS FEEDER



JOB SEPARATOR PREVENTS JOBS
FROM GETTING MIXED UP



CHOICE OF MANUAL OR STAPLELESS
STAPLING



UP TO 6,300-SHEET
PAPER CAPACITY



Time is often limited /This is Why our MFPs are designed to do so much more.

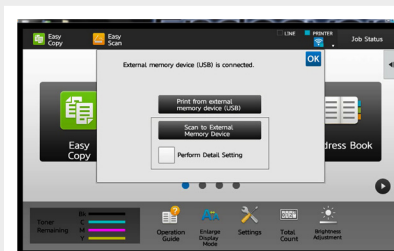
These versatile MFPs can act as print servers to give you 'Pull Printing' capability. This means that you can send a print job to your chosen device or use 'Print Release' to print your documents from another networked MFP, at a time and location that's convenient to you.

Not only does that give you the flexibility of collecting your output when you want but it also protects against sensitive documents being left out in the open.



COLLECT JOBS AT
ANY NETWORKED MFP

SIMPLY PLUG YOUR
USB MEMORY STICK
INTO THE MFP AND
START PRINTING



If you have Microsoft Office files on a USB memory stick you can simply plug into the MFP, select your files and start printing*. Scanning to the memory stick, or to the cloud or for immediate output, is just as easy.

Our unique auto process control and developer refresh system work together to deliver page after page of consistently superior quality, and the Auto Colour Mode lets you scan and copy colour documents without the need to fine-tune any settings.

There's nothing complex, just consistently high quality from mixed content originals.



SUPERB IMAGE QUALITY

* Optional MX-PU10 required to print Microsoft Office files.



No one wants to read the manual /This is Why our MFPs make office life easier, for everyone.

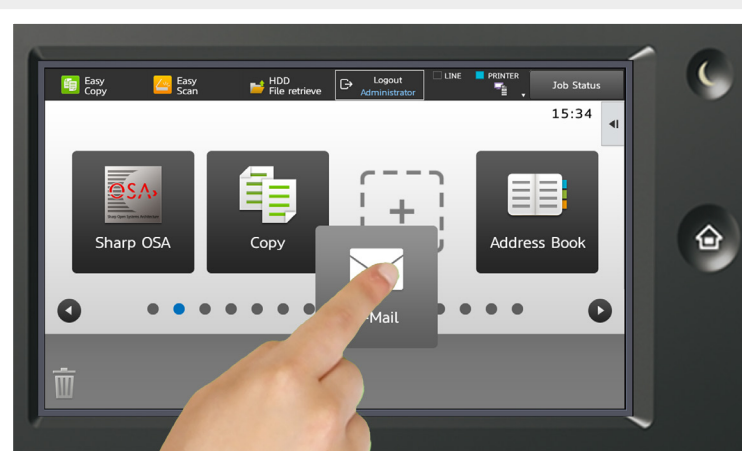
It's important to invest in technology that's easy to use, with the minimum of intervention, so it's good to know that every major feature can be accessed from a highly customisable 10.1" colour LCD touchscreen. We've even added integrated web browsing.

There's nothing to learn and even the most advanced controls can be mastered in moments.

Advanced Functionality

We're all used to accessing data and documents from our phones, tablets and notebooks. But now you can print from them, too. Simply add the wireless LAN option and use Sharpdesk Mobile to print from your mobile device, or any App that supports Google Cloud Print™ or the Android™ printing framework.

We've added a Single Sign-On capability, too. That means that your team members can sign on at the control panel for immediate access to their favourite cloud applications and storage services, including Google Drive™, OneDrive® and SharePoint® Online, without having to re-enter their log in details. Printing directly from the cloud and scanning documents from the MFP up to the cloud has never been easier.



DRAG & DROP ICONS TO
CUSTOMISE THE HOME SCREEN

Overview

Essential Features &
Extra Value Options

High Quality &
High Productivity

Advanced Functionality

**Secure & Environmentally
Friendly**

Optimising Business
Efficiency

Optimised Software
Solutions

Configuration Diagram

Capacity &
Connectivity Options

Finishing Options

Configuration Examples

Specifications



Tough security

Sharp MFPs come with robust security features, such as the encryption and secure erasure of data on the hard disk (automatically as well as on-demand), password controlled access for routine user authentication and a useful Data Initialisation feature to erase data from your MFP when the time comes to replace it.

For even greater security, a third party card reader adds tighter access control, and a secure network interface, SSL, IPsec and port-based network protection defend against the most determined attacks. We even help you prevent the unauthorised copying, scanning, faxing and filing of confidential documents, with our Document Control Function*.

We guard against accidents too, with features such as password-protected PDFs, a Hidden Pattern Print feature which can reveal a watermark and Confidential PIN Printing which requires the user to be present at the MFP before printing begins.

All this, plus S/MIME for secure email communications, advanced data protection and high security logins and user authentication.

* Requires optional Data Security Kit.

Energy efficient

Low melt toner, configurable and automatic power on/off settings, Eco Scan and a shorter warm up time are just some of the many features that ensure extremely low energy consumption.

In addition, the control panel display will prompt users to select the most environmentally friendly option before starting a job and the toner cartridge automatically ejects only when the toner has been fully exhausted, eliminating waste.



Overview

Essential Features &
Extra Value Options

High Quality &
High Productivity

Advanced Functionality

Secure & Environmentally
Friendly

**Optimising Business
Efficiency**

Optimised Software
Solutions

Configuration Diagram

Capacity &
Connectivity Options

Finishing Options

Configuration Examples

Specifications



Busy managers optimise productivity /**This is Why** Sharp optimises workflows.

The MX-4050N, MX-3550N and MX-3050N will transform the productivity of any workgroup. Your whole team will find that printing, copying, scanning and finishing documents is fast, easy and efficient. But that's just the start.

There's a full range of extra-value options and upgrades to choose from, too. For example, if you couple one of these next-generation MFPs with Cloud Portal Office and one or more of our Optimised Software Solutions, you'll see productivity elevated right across the workgroup.

Cloud Portal Office

Cloud Portal Office is our award-winning business-class collaboration service which connects phones, tablets, PCs, Sharp MFPs and our BIG PAD display solutions together in a single, seamless information environment.

In other words, everyone gets on-demand, walk-up access to every document that's stored in the cloud. You can also scan automatically indexed documents directly to a folder in the cloud, and send email alerts to colleagues who need them, all from the MFP.



[CLICK TO LEARN MORE](#)

CLOUD CAPABLE MFP

Overview

Essential Features &
Extra Value Options

High Quality &
High Productivity

Advanced Functionality

Secure & Environmentally
Friendly

Optimising Business
Efficiency

Optimised Software
Solutions

Configuration Diagram

Capacity &
Connectivity Options

Finishing Options

Configuration Examples

Specifications



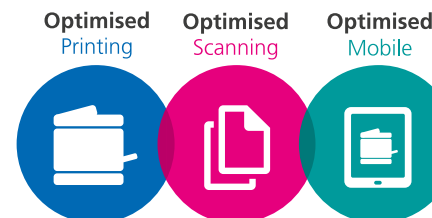
Optimised Software Solutions

We've created our range of Optimised Software Solutions to help you reduce costs, increase efficiency and improve security. Do more with your new Sharp MFP and boost your productivity by adding one or more of these optional solutions:

Our **Optimised Printing Solutions** help you monitor and manage your print and copy usage, so you can eliminate unauthorised use, track and recover costs and reduce waste.

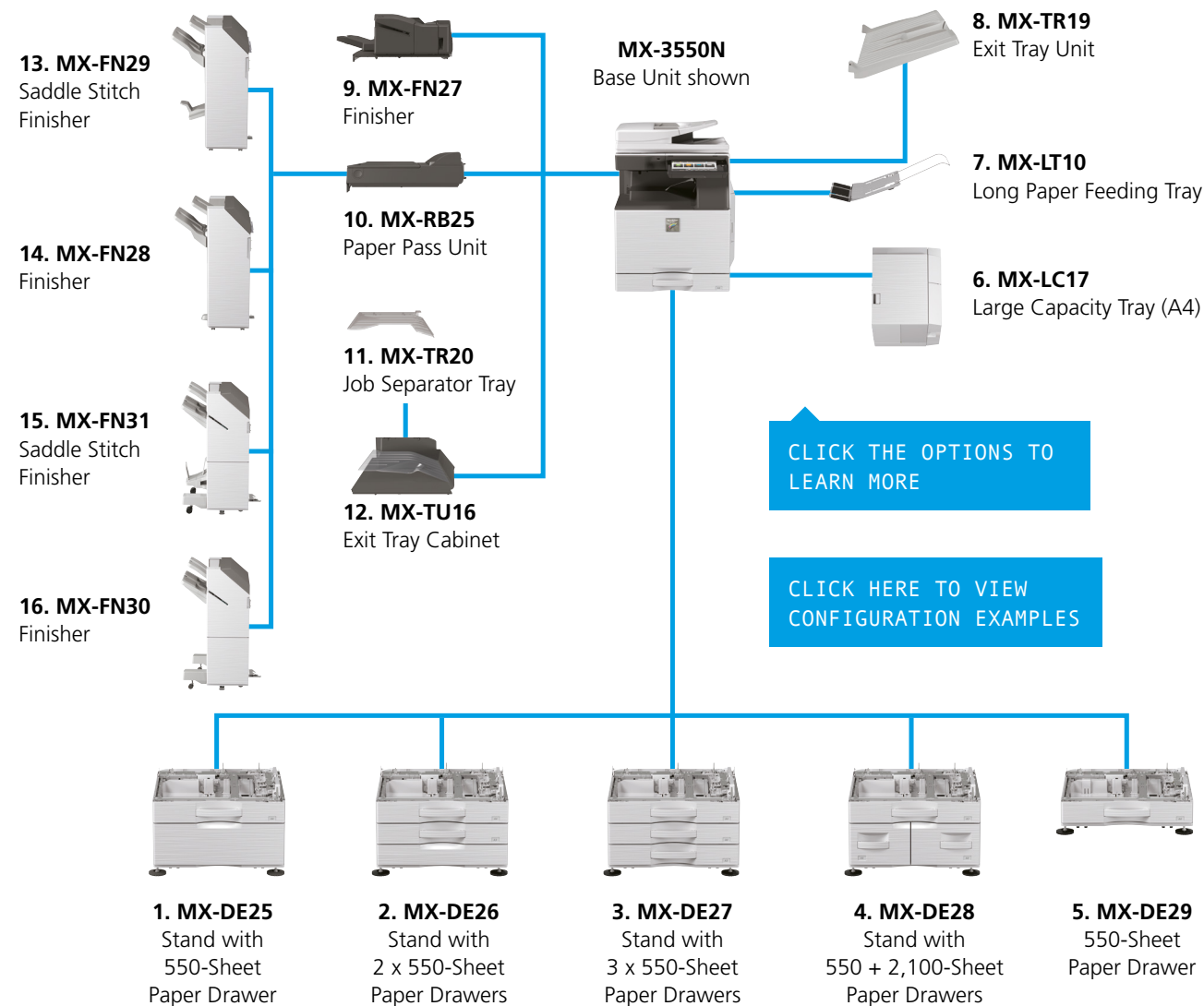
Our **Optimised Scanning Solutions** save time and prevent costly errors by simplifying and automating the capture, storage and sharing of documents, regardless of their format or purpose.

Our **Optimised Mobile Solutions** help people to connect tablets, phones and laptops simply and securely, so they're always in touch.



CLICK TO LEARN MORE

OPTIMISED FOR
PRODUCTIVITY





Capacity & Connectivity Options

1. MX-DE25 Stand with 550-Sheet Paper Drawer550 sheets*¹, SRA3 to A5R (60 - 300 g/m²)**2. MX-DE26 Stand with 2 x 550-Sheet Paper Drawer**550 sheets*¹ each for lower and upper trays, SRA3 to A5R
(60 - 300 g/m²)**3. MX-DE27 Stand with 3 x 550-Sheet Paper Drawer**550 sheets*¹ each for lower and upper trays, SRA3 to A5R
(60 - 300 g/m²)**4. MX-DE28 Stand with 550 + 2,100-Sheet Paper Drawer**Upper tray: SRA3 – A5R, 550 sheets*¹ (80 g/m²)
Lower tray (Left): A4, 1,200 sheets*¹ (60 - 105 g/m²)
Lower tray (Right): A4 - B5, 900 sheets*¹ (60 - 105 g/m²)**5. MX-DE29*² 550-Sheet Paper Drawer**550 sheets*¹, SRA3 to A5R (60 - 300 g/m²)**6. MX-LC17*² Large Capacity Tray (A4)**3,000 sheets*¹, A4 - B5 (60 - 220 g/m²)**MX-UT10 Utility Table****Printing****MX-PK13 PS3 Expansion Kit**

Enables PostScript printing

MX-PU10 Direct Print Expansion Kit**MX-PF10 Barcode Font Kit**

Enables barcode printing

Faxing**MX-FX15 Fax Expansion Kit****MX-FWX1 Internet Fax Expansion Kit****Connectivity****MX-EB18 Wireless LAN Adaptor**

Enables connection to wireless networks

Scanning**MX-EB11 Enhanced Compression Kit**

Enables creation of high compression PDFs

AR-SU1 Stamp Unit

Marks already scanned documents for checking

Sharpdesk Licenses**MX-USX1/X5**

1/5-License Kit

MX-US10/50/A0

10/50/100-License Kit

Sharp OSA®**MX-AMX1 Application Integration Module****MX-AMX2 Application Communication Module****MX-AMX3 External Account Module****Security****MX-FR51U*² Data Security Kit**

Commercial Version

*¹ Number of sheets based on 80 g/m². *² Available at a later date.



Finishing Options

7. MX-LT10 Long Paper Feeding Tray

Recommended for banner printing

8. MX-TR19 Exit Tray Unit

9. MX-FN27 Inner Finisher

A3 - B5 (offset/staple), SRA3 - A5R (non offset)

Offset tray (upper): max. 500-sheet paper capacity*¹

Stapling capacity: max. 50-sheet multi-position staple*¹

Staple position: 3 locations (front, rear or 2 point stitching)

Manual Stapling: 1-point at rear (Flat), 45 sheets (64 g/m²), 40 sheets (80 g/m²)

Stapleless capacity: max.5-sheet (64 g/m²), 4 sheet (65 – 81.4 g/m²), 3 sheet (81.5 - 105 g/m²)

Stapleless position: 1-point at rear (Slant), A3 - B5

Optional Punch Module for MX-FN27:

MX-PN14C - 2/4 Hole Punch Module

MX-PN14D - 4 Hole Wide Punch Module

10. MX-RB25 Paper Pass Unit

Required when using MX-FN28, MX-FN29, MX-FN30 & MX-FN31

11. MX-TR20 Job Separator Tray

Requires MX-TU16 Exit Tray Cabinet

12. MX-TU16 Exit Tray Cabinet

13. MX-FN29 1k Saddle Stitch Finisher

A3W - A5R (offset/staple), SRA3 - A5R (non offset)

Offset tray (upper): max.1,000-sheet paper capacity*¹

Stapling capacity: max. 50-sheet multi-position staple*¹

Staple position: 1-point at front (Flat), 1-point at back (Flat), 2 point stitching

Saddle stitch tray (lower): 7 sets (11-15 sheets), 10 sets (6-10 sheets), 20 sets (1-5 sheets). 15 sheets max per set

14. MX-FN28 1k Finisher

A3W - A5R (offset/staple), SRA3 - A5R (non offset)

Offset tray (upper): max.1,000-sheet paper capacity*¹

Stapling capacity: max. 50-sheet multi-position staple*¹

Staple position: 1-point at front (Flat), 1-point at back (Flat), 2 point stitching

14. MX-FN28 1k Finisher

A3W - A5R (offset/staple), SRA3 - A5R (non offset)

Offset tray (upper): max.1,000-sheet paper capacity*¹

Stapling capacity: max. 50-sheet multi-position staple*¹

Staple position: 1-point at front (Flat), 1-point at back (Flat), 2 point stitching

Optional Punch Module for MX-FN29 & MX-FN28:

MX-PN15C - 2/4 Hole Punch Module

MX-PN15D - 4 Hole Wide Punch Module

15. MX-FN31*² 3k Saddle Stitch Finisher

A3 - B5 (offset/staple), SRA3 - A5R (non offset)

Offset tray (upper): max.3,000-sheet paper capacity*¹

Stapling capacity: max. 65-sheet multi-position staple*¹

Staple position: 1-point at front (Slant), 1-point at back (Slant), 2 point stitching

Manual Stapling: 1-point at rear (Flat), 45 sheets (64 g/m²), 40 sheets (80 g/m²)

Stapleless capacity: max.5-sheet (64 g/m²), 4 sheet (65 – 81.4 g/m²), 3 sheet (81.5 - 105 g/m²)

Stapleless position: 1-point at rear (Slant), A3 - B5

Saddle stitch tray (lower): 10 sets (11-15 sheets),

15 sets (6-10 sheets), 25 sets (1-5 sheets). 20 sheets max per set

16. MX-FN30*² 3k Finisher

A3 - B5 (offset/staple), SRA3 - A5R (non offset)

Offset tray (upper): max.3,000-sheet paper capacity*¹

Stapling capacity: max. 65-sheet multi-position staple*¹

Staple position: 1-point at front (Slant), 1-point at back (Slant), 2 point stitching

Manual Stapling: 1-point at rear (Flat), 45 sheets (64 g/m²), 40 sheets (80 g/m²)

Stapleless capacity: max.5-sheet (64 g/m²), 4 sheet (65 – 81.4 g/m²), 3 sheet (81.5 - 105 g/m²)

Stapleless position: 1-point at rear (Slant), A3 - B5

Optional Punch Module for MX-FN31 & MX-FN30:

MX-PN16C - 2/4 Hole Punch Module

MX-PN16D - 4 Hole Wide Punch Module

*¹ Number of sheets based on 80 g/m². *² Available at a later date.

Overview

Essential Features &
Extra Value Options

High Quality &
High Productivity

Advanced Functionality

Secure & Environmentally
Friendly

Optimising Business
Efficiency

Optimised Software
Solutions

Configuration Diagram

Capacity &
Connectivity Options

Finishing Options

Configuration Examples

Specifications



MX-3550N BASE UNIT
EXIT TRAY CABINET
550-SHEET PAPER DRAWER



MX-3550N BASE UNIT
INNER FINISHER
STAND WITH 550 +
2,100-SHEET PAPER DRAWERS
EXIT TRAY UNIT



MX-3550N BASE UNIT
STAND WITH 3 X
550-SHEET PAPER DRAWERS
FINISHER + PAPER PASS UNIT
EXIT TRAY UNIT
LARGE CAPACITY TRAY

Overview

Essential Features &
Extra Value Options

High Quality &
High Productivity

Advanced Functionality

Secure & Environmentally
Friendly

Optimising Business
Efficiency

Optimised Software
Solutions

Configuration Diagram

Capacity &
Connectivity Options

Finishing Options

Configuration Examples

Specifications



Specifications

General

Network Printer

Copier

Network Scanner

Wireless LAN (optional MX-EB18 required)

Document Filing

Fax (optional MX-FX15 required)

External Dimensions

CLICK THE SPECIFICATION BUTTONS
FOR FURTHER INFORMATION

SHARP

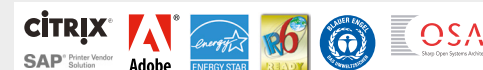
Inspiring ideas from technology

www.sharp.eu

Notes

*1 Long-edge feeding. *2 Only short-edge feeding can be used with A5 paper. *3 At rated voltage, 23°C (73.4°F). May vary depending on operating conditions and environment. *4 HDD capacity depends on procurement and sourcing status. *5 Including adjusters and protuberances. *6 Long-edge feeding of A4 sheets from 1st paper tray, using document glass, without Auto Colour Selection and Auto Colour mode, MFP in fully ready condition. May vary depending on operating conditions and environment. *7 Based on Sharp's A4 standard chart, using document feeder and long-edge feeding. Using factory default settings with Auto Colour Selection off. Scan speed will vary depending on the type of document and the scan settings. *8 Requires optional MX-EB11. *9 Colour/greyscale only. *10 Not applicable to Software AP mode. *11 Storage capacity will vary depending on the type of document and the scan settings. *12 Some features require option(s). *13 Based on Sharp's standard chart with approx. 700 characters (A4 long-edge feeding) at standard resolution in Super G3 mode, 33,600 bps, JBIG compression.

Design and specifications are subject to change without prior notice. All information was correct at time of print. The ENERGY STAR logo is a certification mark and may only be used to certify specific products that have been determined to meet the ENERGY STAR programme requirements. ENERGY STAR is a US registered mark. Windows, Windows NT, Windows XP and Windows Vista are registered trademarks of Microsoft Corporation. Adobe and PostScript 3 are either registered trademarks or trademarks of Adobe Systems Incorporated in the U.S. and/or other countries. All other company names, product names and logotypes are trademarks or registered trademarks of their respective owners. ©Sharp Corporation March 2016. Ref: MX-4050N/MX-3550N/MX-3050N Brochure Job:17187. All trademarks acknowledged. E&OE.



Overview

Essential Features &
Extra Value OptionsHigh Quality &
High Productivity

Advanced Functionality

Secure & Environmentally
FriendlyOptimising Business
EfficiencyOptimised Software
Solutions

Configuration Diagram

Capacity &
Connectivity Options

Finishing Options

Configuration Examples

Specifications



Specifications

General

Network Printer

Copier

Network Scanner

Wireless LAN (optional MX-EB18 required)

Document Filing

Fax (optional MX-FX15 required)

External Dimensions

CLICK THE SPECIFICATION BUTTONS
FOR FURTHER INFORMATION

Engine speed (ppm/cpm) (Max)	A4* ¹	A3	SRA3
MX-4050N	40	20	18
MX-3550N	35	18	16
MX-3050N	30	16	15

Control panel display 10.1-inch colour LCD touchscreen

Paper size (Min – Max) SRA3 – A5*²

Paper weight (g/m ²)	
Tray	60 - 300
Multi-bypass	55 - 300

Paper capacity (Std – Max)	
Sheets	650 - 6,300
Drawers	1 - 4 (plus bypass tray)

Warm-up time*³ (seconds) 10

Memory (GB)	
Copier/Printer (shared)	5
HDD* ⁴	250

Power requirements Rated local AC voltage $\pm 10\%$, 50/60 Hz

Power consumption (kW) (Max) 1.84 (220 to 240V)

Dimensions (mm) (W x D x H)*⁵ 608 x 650 x 834

Weight (kg) 79

SHARP

Inspiring ideas from technology

www.sharp.eu

Notes

*¹ Long-edge feeding. *² Only short-edge feeding can be used with A5 paper. *³ At rated voltage, 23°C (73.4°F). May vary depending on operating conditions and environment. *⁴ HDD capacity depends on procurement and sourcing status. *⁵ Including adjusters and protuberances. *⁶ Long-edge feeding of A4 sheets from 1st paper tray, using document glass, without Auto Colour Selection and Auto Colour mode, MFP in fully ready condition. May vary depending on operating conditions and environment. *⁷ Based on Sharp's A4 standard chart, using document feeder and long-edge feeding. Using factory default settings with Auto Colour Selection off. Scan speed will vary depending on the type of document and the scan settings. *⁸ Requires optional MX-EB11. *⁹ Colour/greyscale only. *¹⁰ Not applicable to Software AP mode. *¹¹ Storage capacity will vary depending on the type of document and the scan settings. *¹² Some features require option(s). *¹³ Based on Sharp's standard chart with approx. 700 characters (A4 long-edge feeding) at standard resolution in Super G3 mode, 33,600 bps, JBIG compression.

Design and specifications are subject to change without prior notice. All information was correct at time of print. The ENERGY STAR logo is a certification mark and may only be used to certify specific products that have been determined to meet the ENERGY STAR programme requirements. ENERGY STAR is a US registered mark. Windows, Windows NT, Windows XP and Windows Vista are registered trademarks of Microsoft Corporation. Adobe and PostScript 3 are either registered trademarks or trademarks of Adobe Systems Incorporated in the U.S. and/or other countries. All other company names, product names and logotypes are trademarks or registered trademarks of their respective owners. ©Sharp Corporation March 2016. Ref: MX-4050N/MX-3550N/MX-3050N Brochure Job:17187. All trademarks acknowledged. E&OE.



Overview

Essential Features &
Extra Value Options

High Quality &
High Productivity

Advanced Functionality

Secure & Environmentally
Friendly

Optimising Business
Efficiency

Optimised Software
Solutions

Configuration Diagram

Capacity &
Connectivity Options

Finishing Options

Configuration Examples

Specifications



Specifications

General

Network Printer

Copier

Network Scanner

Wireless LAN (optional MX-EB18 required)

Document Filing

Fax (optional MX-FX15 required)

External Dimensions

CLICK THE SPECIFICATION BUTTONS
FOR FURTHER INFORMATION

Resolution (dpi)	600 x 600, 9,600 (equivalent) x 600
Interface	USB 2.0, 10Base-T/100Base-TX/1000Base-T
Supported OS	Windows Server® 2008, 2008R2, 2012, 2012R2, Windows Vista®, Windows® 7, 8.1, 10 Mac OS X 10.4, 10.5, 10.6, 10.7, 10.8, 10.9, 10.10, 10.11
Network protocols	TCP/IP
Printing protocols	LPR, Raw TCP (port 9100), POP3 (e-mail printing), HTTP, FTP for downloading print files, IPP, SMB, WSD
PDL	Standard: PCL 6 emulation Adobe® PostScript®3™
Available fonts	80 fonts for PCL, 139 fonts for Adobe PostScript 3

SHARP

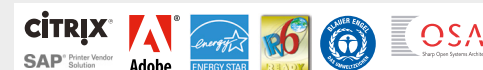
Inspiring ideas from technology

www.sharp.eu

Notes

*1 Long-edge feeding. *2 Only short-edge feeding can be used with A5 paper. *3 At rated voltage, 23°C (73.4°F). May vary depending on operating conditions and environment. *4 HDD capacity depends on procurement and sourcing status. *5 Including adjusters and protuberances. *6 Long-edge feeding of A4 sheets from 1st paper tray, using document glass, without Auto Colour Selection and Auto Colour mode, MFP in fully ready condition. May vary depending on operating conditions and environment. *7 Based on Sharp's A4 standard chart, using document feeder and long-edge feeding. Using factory default settings with Auto Colour Selection off. Scan speed will vary depending on the type of document and the scan settings. *8 Requires optional MX-EB11. *9 Colour/greyscale only. *10 Not applicable to Software AP mode. *11 Storage capacity will vary depending on the type of document and the scan settings. *12 Some features require option(s). *13 Based on Sharp's standard chart with approx. 700 characters (A4 long-edge feeding) at standard resolution in Super G3 mode, 33,600 bps, JBIG compression.

Design and specifications are subject to change without prior notice. All information was correct at time of print. The ENERGY STAR logo is a certification mark and may only be used to certify specific products that have been determined to meet the ENERGY STAR programme requirements. ENERGY STAR is a US registered mark. Windows, Windows NT, Windows XP and Windows Vista are registered trademarks of Microsoft Corporation. Adobe and PostScript 3 are either registered trademarks or trademarks of Adobe Systems Incorporated in the U.S. and/or other countries. All other company names, product names and logotypes are trademarks or registered trademarks of their respective owners. ©Sharp Corporation March 2016. Ref: MX-4050N/MX-3550N/MX-3050N Brochure Job:17187. All trademarks acknowledged. E&OE.



Overview

Essential Features &
Extra Value Options

High Quality &
High Productivity

Advanced Functionality

Secure & Environmentally
Friendly

Optimising Business
Efficiency

Optimised Software
Solutions

Configuration Diagram

Capacity &
Connectivity Options

Finishing Options

Configuration Examples

Specifications



Specifications

- General
- Network Printer
- Copier
- Network Scanner
- Wireless LAN (optional MX-EB18 required)
- Document Filing
- Fax (optional MX-FX15 required)
- External Dimensions

CLICK THE SPECIFICATION BUTTONS
FOR FURTHER INFORMATION

Original paper size (Max)	A3
First copy time* ⁶ (seconds)	Full colour B/W 6.7 4.7
Continuous copies (Max)	9,999
Resolution (dpi)	
Scan (colour)	600 x 600
Scan (B/W)	600 x 600, 600 x 400, 600 x 300
Print	600 x 600, 9,600 (equivalent) x 600 (depending on copy copy mode)
Gradation levels	256
Zoom range (%)	25 – 400, (25 – 200 using RSPF) in 1% increments
Preset copy ratios (Metric)	10 ratios (5R/5E)

SHARP

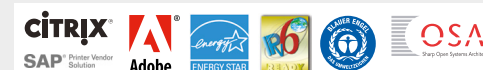
Inspiring ideas from technology

www.sharp.eu

Notes

*¹ Long-edge feeding. *² Only short-edge feeding can be used with A5 paper. *³ At rated voltage, 23°C (73.4°F). May vary depending on operating conditions and environment. *⁴ HDD capacity depends on procurement and sourcing status. *⁵ Including adjusters and protuberances. *⁶ Long-edge feeding of A4 sheets from 1st paper tray, using document glass, without Auto Colour Selection and Auto Colour mode, MFP in fully ready condition. May vary depending on operating conditions and environment. *⁷ Based on Sharp's A4 standard chart, using document feeder and long-edge feeding. Using factory default settings with Auto Colour Selection off. Scan speed will vary depending on the type of document and the scan settings. *⁸ Requires optional MX-EB11. *⁹ Colour/greyscale only. *¹⁰ Not applicable to Software AP mode. *¹¹ Storage capacity will vary depending on the type of document and the scan settings. *¹² Some features require option(s). *¹³ Based on Sharp's standard chart with approx. 700 characters (A4 long-edge feeding) at standard resolution in Super G3 mode, 33,600 bps, JBIG compression.

Design and specifications are subject to change without prior notice. All information was correct at time of print. The ENERGY STAR logo is a certification mark and may only be used to certify specific products that have been determined to meet the ENERGY STAR programme requirements. ENERGY STAR is a US registered mark. Windows, Windows NT, Windows XP and Windows Vista are registered trademarks of Microsoft Corporation. Adobe and PostScript 3 are either registered trademarks or trademarks of Adobe Systems Incorporated in the U.S. and/or other countries. All other company names, product names and logotypes are trademarks or registered trademarks of their respective owners. ©Sharp Corporation March 2016. Ref: MX-4050N/MX-3550N/MX-3050N Brochure Job:17187. All trademarks acknowledged. E&OE.



Overview

Essential Features &
Extra Value Options

High Quality &
High Productivity

Advanced Functionality

Secure & Environmentally
Friendly

Optimising Business
Efficiency

Optimised Software
Solutions

Configuration Diagram

Capacity &
Connectivity Options

Finishing Options

Configuration Examples

Specifications



Specifications

- General
- Network Printer
- Copier
- Network Scanner
- Wireless LAN (optional MX-EB18 required)
- Document Filing
- Fax (optional MX-FX15 required)
- External Dimensions

CLICK THE SPECIFICATION BUTTONS
FOR FURTHER INFORMATION

Scan method	Push scan (via control panel) Pull scan (TWAIN-compliant application)
Scan speed*7	One-sided Two-sided 80 25
Resolution (dpi) (Max)	Push scan 100, 150, 200, 300, 400, 600 Pull scan 75, 100, 150, 200, 300, 400, 600 50 to 9,600 dpi via user setting
File formats	TIFF, PDF, PDF/A, encrypted PDF, compact PDF*8 *9, JPEG*9, XPS
Scan destinations	Scan to e-mail, desktop, FTP server, network folder (SMB), USB memory, HDD
Scanner utilities	Sharpdesk

SHARP

Inspiring ideas from technology

www.sharp.eu

Notes

*1 Long-edge feeding. *2 Only short-edge feeding can be used with A5 paper. *3 At rated voltage, 23°C (73.4°F). May vary depending on operating conditions and environment. *4 HDD capacity depends on procurement and sourcing status. *5 Including adjusters and protuberances. *6 Long-edge feeding of A4 sheets from 1st paper tray, using document glass, without Auto Colour Selection and Auto Colour mode, MFP in fully ready condition. May vary depending on operating conditions and environment. *7 Based on Sharp's A4 standard chart, using document feeder and long-edge feeding. Using factory default settings with Auto Colour Selection off. Scan speed will vary depending on the type of document and the scan settings. *8 Requires optional MX-EB11. *9 Colour/greyscale only. *10 Not applicable to Software AP mode. *11 Storage capacity will vary depending on the type of document and the scan settings. *12 Some features require option(s). *13 Based on Sharp's standard chart with approx. 700 characters (A4 long-edge feeding) at standard resolution in Super G3 mode, 33,600 bps, JBIG compression.

Design and specifications are subject to change without prior notice. All information was correct at time of print. The ENERGY STAR logo is a certification mark and may only be used to certify specific products that have been determined to meet the ENERGY STAR programme requirements. ENERGY STAR is a US registered mark. Windows, Windows NT, Windows XP and Windows Vista are registered trademarks of Microsoft Corporation. Adobe and PostScript 3 are either registered trademarks or trademarks of Adobe Systems Incorporated in the U.S. and/or other countries. All other company names, product names and logos are trademarks or registered trademarks of their respective owners. ©Sharp Corporation March 2016. Ref: MX-4050N/MX-3550N/MX-3050N Brochure Job:17187. All trademarks acknowledged. E&OE.



Overview

Essential Features &
Extra Value Options

High Quality &
High Productivity

Advanced Functionality

Secure & Environmentally
Friendly

Optimising Business
Efficiency

Optimised Software
Solutions

Configuration Diagram

Capacity &
Connectivity Options

Finishing Options

Configuration Examples

Specifications



Specifications

- General
- Network Printer
- Copier
- Network Scanner
- Wireless LAN (optional MX-EB18 required)
- Document Filing
- Fax (optional MX-FX15 required)
- External Dimensions

CLICK THE SPECIFICATION BUTTONS
FOR FURTHER INFORMATION

Compliant regulation	IEEE802.11n/g/b
Access mode	Infrastructure mode, Software AP mode
Security	WEP, WPA/WPA2-mixed PSK, WPA/WPA2-mixed EAP* ¹⁰ , WPA2 PSA, WPA2 EAP* ¹⁰

SHARP

Inspiring ideas from technology

www.sharp.eu

Notes

*¹ Long-edge feeding. *² Only short-edge feeding can be used with A5 paper. *³ At rated voltage, 23°C (73.4°F). May vary depending on operating conditions and environment. *⁴ HDD capacity depends on procurement and sourcing status. *⁵ Including adjusters and protuberances. *⁶ Long-edge feeding of A4 sheets from 1st paper tray, using document glass, without Auto Colour Selection and Auto Colour mode, MFP in fully ready condition. May vary depending on operating conditions and environment. *⁷ Based on Sharp's A4 standard chart, using document feeder and long-edge feeding. Using factory default settings with Auto Colour Selection off. Scan speed will vary depending on the type of document and the scan settings. *⁸ Requires optional MX-EB11. *⁹ Colour/greyscale only. *¹⁰ Not applicable to Software AP mode. *¹¹ Storage capacity will vary depending on the type of document and the scan settings. *¹² Some features require option(s). *¹³ Based on Sharp's standard chart with approx. 700 characters (A4 long-edge feeding) at standard resolution in Super G3 mode, 33,600 bps, JBIG compression.

Design and specifications are subject to change without prior notice. All information was correct at time of print. The ENERGY STAR logo is a certification mark and may only be used to certify specific products that have been determined to meet the ENERGY STAR programme requirements. ENERGY STAR is a US registered mark. Windows, Windows NT, Windows XP and Windows Vista are registered trademarks of Microsoft Corporation. Adobe and PostScript 3 are either registered trademarks or trademarks of Adobe Systems Incorporated in the U.S. and/or other countries. All other company names, product names and logotypes are trademarks or registered trademarks of their respective owners. ©Sharp Corporation March 2016. Ref: MX-4050N/MX-3550N/MX-3050N Brochure Job:17187. All trademarks acknowledged. E&OE.



Overview

Essential Features &
Extra Value Options

High Quality &
High Productivity

Advanced Functionality

Secure & Environmentally
Friendly

Optimising Business
Efficiency

Optimised Software
Solutions

Configuration Diagram

Capacity &
Connectivity Options

Finishing Options

Configuration Examples

Specifications



Specifications

- General
- Network Printer
- Copier
- Network Scanner
- Wireless LAN (optional MX-EB18 required)
- Document Filing
- Fax (optional MX-FX15 required)
- External Dimensions

CLICK THE SPECIFICATION BUTTONS
FOR FURTHER INFORMATION

Document filing capacity ^{*11}	Pages	Files
Main & custom folders	20,000	3,000
Quick file folder	10,000	1,000
Stored jobs ^{*12}	Copy, print, scan, fax transmission	
Storage folders	Quick file folder, main folder, custom folder (max. 1,000)	

SHARP

Inspiring ideas from technology

www.sharp.eu

Notes

^{*1} Long-edge feeding. ^{*2} Only short-edge feeding can be used with A5 paper. ^{*3} At rated voltage, 23°C (73.4°F). May vary depending on operating conditions and environment. ^{*4} HDD capacity depends on procurement and sourcing status. ^{*5} Including adjusters and protuberances. ^{*6} Long-edge feeding of A4 sheets from 1st paper tray, using document glass, without Auto Colour Selection and Auto Colour mode, MFP in fully ready condition. May vary depending on operating conditions and environment. ^{*7} Based on Sharp's A4 standard chart, using document feeder and long-edge feeding. Using factory default settings with Auto Colour Selection off. Scan speed will vary depending on the type of document and the scan settings. ^{*8} Requires optional MX-EB11. ^{*9} Colour/greyscale only. ^{*10} Not applicable to Software AP mode. ^{*11} Storage capacity will vary depending on the type of document and the scan settings. ^{*12} Some features require option(s). ^{*13} Based on Sharp's standard chart with approx. 700 characters (A4 long-edge feeding) at standard resolution in Super G3 mode, 33,600 bps, JBIG compression.

Design and specifications are subject to change without prior notice. All information was correct at time of print. The ENERGY STAR logo is a certification mark and may only be used to certify specific products that have been determined to meet the ENERGY STAR programme requirements. ENERGY STAR is a US registered mark. Windows, Windows NT, Windows XP and Windows Vista are registered trademarks of Microsoft Corporation. Adobe and PostScript 3 are either registered trademarks or trademarks of Adobe Systems Incorporated in the U.S. and/or other countries. All other company names, product names and logotypes are trademarks or registered trademarks of their respective owners. ©Sharp Corporation March 2016. Ref: MX-4050N/MX-3550N/MX-3050N Brochure Job:17187. All trademarks acknowledged. E&OE.



Overview

Essential Features &
Extra Value Options

High Quality &
High Productivity

Advanced Functionality

Secure & Environmentally
Friendly

Optimising Business
Efficiency

Optimised Software
Solutions

Configuration Diagram

Capacity &
Connectivity Options

Finishing Options

Configuration Examples

Specifications



Specifications

- General
- Network Printer
- Copier
- Network Scanner
- Wireless LAN (optional MX-EB18 required)
- Document Filing
- Fax (optional MX-FX15 required)
- External Dimensions

CLICK THE SPECIFICATION BUTTONS
FOR FURTHER INFORMATION

Compression method	MH/MR/MMR/JBIG
Communication protocol	Super G3/G3
Transmission time ^{*13} (seconds)	Less than 3
Modem speed (bps)	33,600 – 2,400 with automatic fallback
Transmission resolution (dpi)	203.2 x 97.8 (Std) / 406.4 x 391 (Ultra Fine)
Recording width	A3 – A5
Memory (GB)	1 (built-in)

SHARP

Inspiring ideas from technology

www.sharp.eu

Notes

^{*1} Long-edge feeding. ^{*2} Only short-edge feeding can be used with A5 paper. ^{*3} At rated voltage, 23°C (73.4°F). May vary depending on operating conditions and environment. ^{*4} HDD capacity depends on procurement and sourcing status. ^{*5} Including adjusters and protuberances. ^{*6} Long-edge feeding of A4 sheets from 1st paper tray, using document glass, without Auto Colour Selection and Auto Colour mode, MFP in fully ready condition. May vary depending on operating conditions and environment. ^{*7} Based on Sharp's A4 standard chart, using document feeder and long-edge feeding. Using factory default settings with Auto Colour Selection off. Scan speed will vary depending on the type of document and the scan settings. ^{*8} Requires optional MX-EB11. ^{*9} Colour/greyscale only. ^{*10} Not applicable to Software AP mode. ^{*11} Storage capacity will vary depending on the type of document and the scan settings. ^{*12} Some features require option(s). ^{*13} Based on Sharp's standard chart with approx. 700 characters (A4 long-edge feeding) at standard resolution in Super G3 mode, 33,600 bps, JBIG compression.

Design and specifications are subject to change without prior notice. All information was correct at time of print. The ENERGY STAR logo is a certification mark and may only be used to certify specific products that have been determined to meet the ENERGY STAR programme requirements. ENERGY STAR is a US registered mark. Windows, Windows NT, Windows XP and Windows Vista are registered trademarks of Microsoft Corporation. Adobe and PostScript 3 are either registered trademarks or trademarks of Adobe Systems Incorporated in the U.S. and/or other countries. All other company names, product names and logotypes are trademarks or registered trademarks of their respective owners. ©Sharp Corporation March 2016. Ref: MX-4050N/MX-3550N/MX-3050N Brochure Job:17187. All trademarks acknowledged. E&OE.



Overview

Essential Features &
Extra Value Options

High Quality &
High Productivity

Advanced Functionality

Secure & Environmentally
Friendly

Optimising Business
Efficiency

Optimised Software
Solutions

Configuration Diagram

Capacity &
Connectivity Options

Finishing Options

Configuration Examples

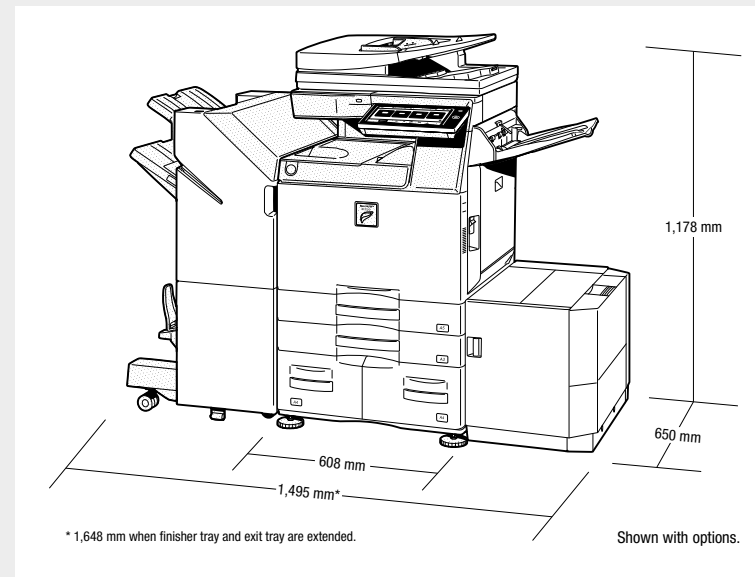
Specifications



Specifications

- General
- Network Printer
- Copier
- Network Scanner
- Wireless LAN (optional MX-EB18 required)
- Document Filing
- Fax (optional MX-FX15 required)
- External Dimensions

CLICK THE SPECIFICATION BUTTONS
FOR FURTHER INFORMATION



SHARP

Inspiring ideas from technology

www.sharp.eu

Notes

*¹ Long-edge feeding. *² Only short-edge feeding can be used with A5 paper. *³ At rated voltage, 23°C (73.4°F). May vary depending on operating conditions and environment. *⁴ HDD capacity depends on procurement and sourcing status. *⁵ Including adjusters and protuberances. *⁶ Long-edge feeding of A4 sheets from 1st paper tray, using document glass, without Auto Colour Selection and Auto Colour mode, MFP in fully ready condition. May vary depending on operating conditions and environment. *⁷ Based on Sharp's A4 standard chart, using document feeder and long-edge feeding. Using factory default settings with Auto Colour Selection off. Scan speed will vary depending on the type of document and the scan settings. *⁸ Requires optional MX-EB11. *⁹ Colour/greyscale only. *¹⁰ Not applicable to Software AP mode. *¹¹ Storage capacity will vary depending on the type of document and the scan settings. *¹² Some features require option(s). *¹³ Based on Sharp's standard chart with approx. 700 characters (A4 long-edge feeding) at standard resolution in Super G3 mode, 33,600 bps, JBIG compression.

Design and specifications are subject to change without prior notice. All information was correct at time of print. The ENERGY STAR logo is a certification mark and may only be used to certify specific products that have been determined to meet the ENERGY STAR programme requirements. ENERGY STAR is a US registered mark. Windows, Windows NT, Windows XP and Windows Vista are registered trademarks of Microsoft Corporation. Adobe and PostScript 3 are either registered trademarks or trademarks of Adobe Systems Incorporated in the U.S. and/or other countries. All other company names, product names and logotypes are trademarks or registered trademarks of their respective owners. ©Sharp Corporation March 2016. Ref: MX-4050N/MX-3550N/MX-3050N Brochure Job:17187. All trademarks acknowledged. E&OE.

